



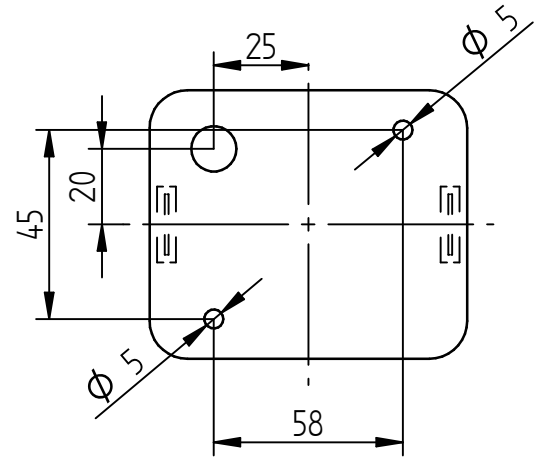
**Helestra Leuchten GmbH**  
An den Breiten 7 / D-01454 Leppersdorf  
P.O.Box 010141 / D-01446 Radeberg  
Tel.: +49 (0) 3528 / 4383 - 0  
Fax: +49 (0) 3528 / 4383 - 44  
e-mail: [info@helestra-leuchten.de](mailto:info@helestra-leuchten.de)

**MONTAGEANLEITUNG**  
**MOUNTING INSTRUCTIONS**  
**INSTRUCTIONS DE MONTAGE**  
**INSTRUCCIONES DE MONTAJE**

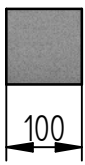
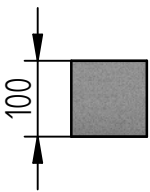
**SIRI 44**

A28242.xx  
A28342.xx

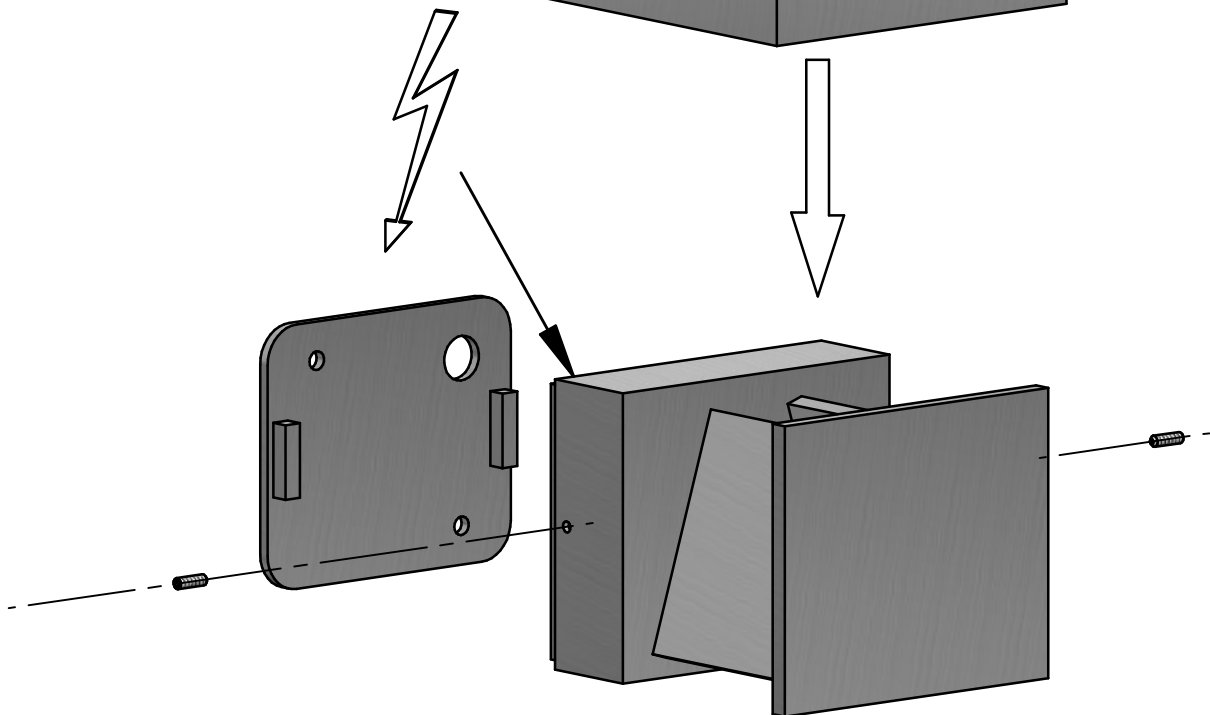
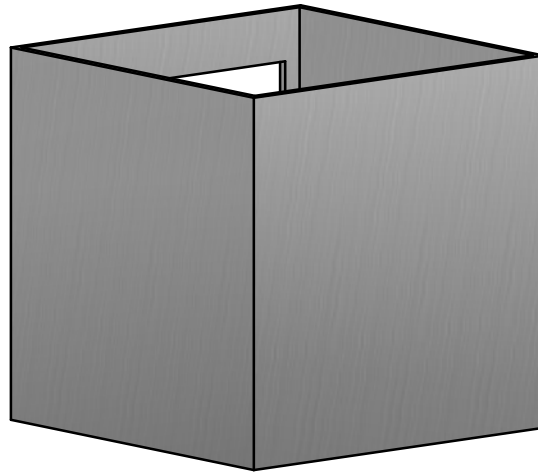
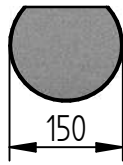
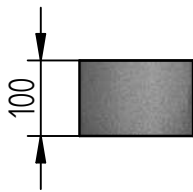
Artikel. Nr.	Spannung	Bestückung
A28242.xx	220V-240V	6 W, LED, warm weiß ca. 3000 K, 380 Lumen
A28342.xx	220V-240V	6 W, LED, warm weiß ca. 3000 K, 380 Lumen



A28242.xx



A28342.xx



**Anleitung für Wartung und Demontage aufbewahren!**

Bitte beachten Sie unsere allgemeinen Hinweise !  
Nous vous prions d'observer nos instruction générale !

Please observe our general information !  
Observen por favor nuestra informacion general !